



OUTDOOR STAINLESS STEEL COLUMNS Z-SERIES

COLUMNS WITH FIXED FOUNDATION Z-SERIES

Columns with fixed foundation are available in 6 standard basic dimensions. You can choose from a detachable or hinged door.



ADVANTAGES

- Flexibility regarding dimensions, colours, and accessories
- Short delivery times
- Recyclable materials
- Low maintenance
- Usable lifetime of 30 years
- Reduced condensation by natural ventilation

SPECIFICATIONS

Standard design

- Inside-mounted door(s)
- 60-80 µm polyester powder coating
- Earthing points on door(s) and hull
- Detachable front panel

Material

Several qualities of stainless steel available (1,5 mm)

Closing/lock

Equipped with a Staka screw cylinder as standard

Protection grade

IP43

Installation

The columns come with a betonplex installation panel (15 mm) as standard.

HINGED DOOR

| Item. no | Height (mm) | Width (mm) | Depth (mm) | Installation Panel (mm) |
|----------|-------------|------------|------------|-------------------------|
| | | | | Hight x width |
| ZD320F | 1.170 | 320 | 210 | 600 x 250 |
| ZD400F | 1.170 | 400 | 210 | 600 x 330 |
| ZD500F | 1.170 | 500 | 250 | 600 x 430 |
| ZD600F | 1.170 | 600 | 250 | 600 x 530 |
| ZD800F | 1.170 | 800 | 300 | 600 x 730 |

DETACHABLE DOOR

| Item. no | Height (mm) | Width (mm) | Depth (mm) | Installation Panel (mm) |
|----------|-------------|------------|------------|-------------------------|
| | | | | Hight x width |
| ZS230F | 750 | 230 | 170 | 300 x 160 |
| ZS320F | 1.170 | 320 | 210 | 600 x 250 |
| ZS400F | 1.170 | 400 | 210 | 600 x 330 |
| ZS500F | 1.170 | 500 | 250 | 600 x 430 |
| ZS600F | 1.170 | 600 | 250 | 600 x 530 |
| ZS800F | 1.170 | 800 | 300 | 600 x 730 |



COLUMNS WITH SEPERATE FOUNDATION Z-SERIES

Columns with seperate foundation are available in 5 standard basic dimensions. You can choose between a detachable or hinged door.



SPECIFICATIONS

Standard design

- Inside-mounted door(s)
- 60-80 µm polyester powder coating
- Earthing points on door(s) and hull
- Detachable front panel

Material

Several qualities of stainless steel available (1,5 mm)

Closing/lock

Equipped with a Staka screw cylinder as standard

Protection grade

IP43

Installation

The columns come with a betonplex installation panel (15 mm) as standard.

HINGED DOOR

| Item. no | Height (mm) | Width (mm) | Depth (mm) | Installation Panel (mm) |
|----------|-------------|------------|------------|-------------------------|
| | | | | Hight x width |
| ZD320 | 620 | 320 | 210 | 600 x 250 |
| ZD400 | 620 | 400 | 210 | 600 x 330 |
| ZD500 | 620 | 500 | 250 | 600 x 430 |
| ZD600 | 620 | 600 | 250 | 600 x 530 |
| ZD800 | 620 | 800 | 300 | 600 x 730 |

DETACHABLE DOOR

| Item. no | Height (mm) | Width (mm) | Depth (mm) | Installation Panel (mm) |
|----------|-------------|------------|------------|-------------------------|
| | | | | Hight x width |
| ZS320 | 620 | 320 | 210 | 600 x 250 |
| ZS400 | 620 | 400 | 210 | 600 x 330 |
| ZS500 | 620 | 500 | 250 | 600 x 430 |
| ZS600 | 620 | 600 | 250 | 600 x 530 |
| ZS800 | 620 | 800 | 300 | 600 x 730 |

SEPERATE FOUNDATION

| Item. no | Height (mm) | Width (mm) | Depth (mm) |
|----------|-------------|------------|------------|
| FUNZ320 | 620 | 320 | 210 |
| FUNZ400 | 620 | 400 | 210 |
| FUNZ500 | 620 | 500 | 250 |
| FUNZ600 | 620 | 600 | 250 |
| FUNZ800 | 620 | 800 | 300 |



OPTIONS / ACCESSORIES Z-SERIES



SWING HANDLE



HEATING



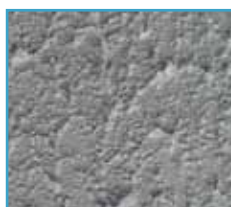
VARIOUS 1/2 EURO-PROFILE
CYLINDERS



ANTI-GRAFFITI COATING



VARIOUS SCREW CYLINDERS



ANTI-FLYPOSTING COATING



AVAILABLE IN ALMOST ALL
RAL COLOURS



REFERENCES



Safety plays an important role in industrial areas. Staka supplies columns for the control systems of various access gates. The column shown above is in an industrial area in Oosterhout.



The Netherlands lives with water. Now more than ever, today's environmental developments demand smart solutions. Many pressure sewer systems are updated each year. Staka columns are ideal for housing pressure sewer pumps, like this one in Soest.



Electric cars are becoming increasingly popular. It makes sense, since an electric car is cleaner, quieter, and more efficient. There are over thousands of charging stations in the Netherlands. Columns from Staka are often the first choice for providing these charging stations with optimal protection.



For years, Staka has been the reliable supplier of the columns for housing the boosters for a major supplier of digital television. Consistent picture quality under all conditions starts with good housing for the equipment.



ABOUT STAKA

Staka has been translating its customers' requirements into high-quality switch enclosures since 1958, always in an ambitious, distinctive, and above all customer-focused manner. With a strong focus on quality and reliability, Staka has built up a loyal clientèle over the years. Our customers are active in a great variety of branches. By further extending knowledge and insight all the time, we are able to offer innovative and practical solutions that fully satisfy changing needs.

At Staka, we believe in the power of innovation and we constantly focus on improving every aspect of our product. We have high-quality production facilities, so we are able to deliver a constantly high quality at competitive prices. Staka employs professionals who have a passion for their work. The team comprises a strong mix of young and old, whereby years of experience are combined with new insights.

Staka is keen to profile itself as the best supplier in the field of switch enclosures. If you would like to find out how we can support you in achieving your goals, and you want to cut costs, increase quality, reduce errors, or shorten delivery times, please contact us.

Staka
Tel.: +31 (0) 162-46 89 50
www.staka.com

